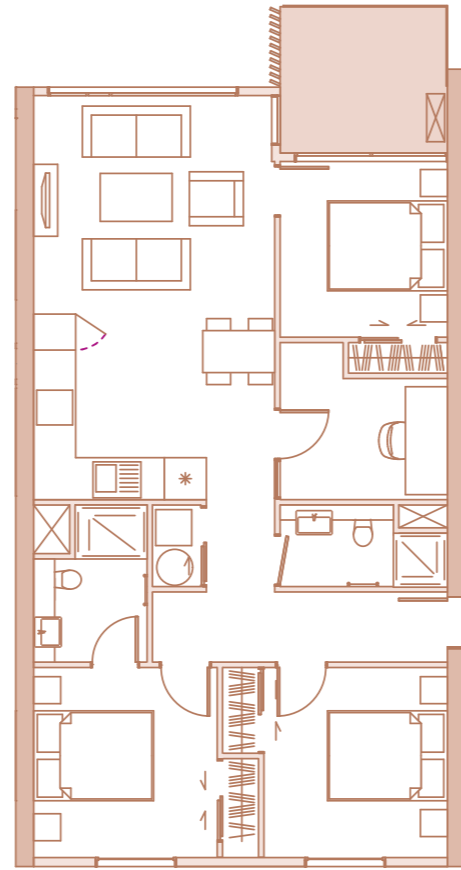


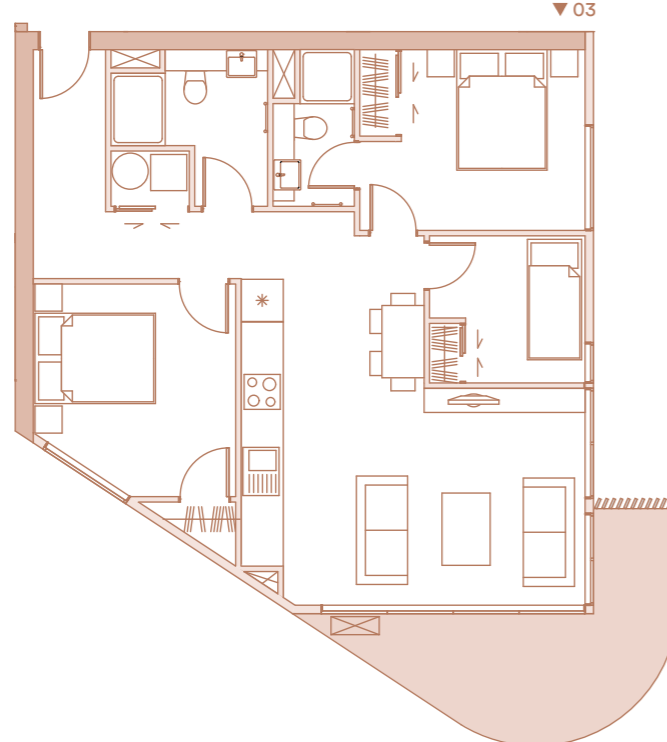
Fig. 01 Image
 Fig. 02 Layout 1
 Floor plan of layout option one
 Fig. 03 Layout 2
 Floor plan of layout option two



3BR



▲ 02



▼ 03

S.03

P.33

Three Bedroom

Layout 2 Specs

Bedrooms	03
Bathrooms	02
Apartment	80.9m ²
Balcony	11.5m ²

Layout 1 Specs

Bedrooms	03
Bathrooms	02
Study	01
Apartment	88.1m ²
Balcony	6.8m ²

Layout 1 Info

This attractive three-bedroom apartment enjoys floor-to-ceiling views to the stunning lake from both the living-area and the master-bedroom. It is also double aspect for maximum sunlight throughout the day. Double-glazing makes for a warm apartment in colder months and ensures your acoustic privacy. It is complemented by two bathrooms, a separate laundry and a study/utility room.

Layout 2 Info

One of the premier apartments of the whole development, this large home is situated on the lakefront of the site. A sought after corner apartment it enjoys a wrap-around feature balcony-perfect for watching the world go by below. The clever design maximizes sunlight in the apartment and provides excellent views of the lake and the landscaped terraces leading down to the water.

The living area is light and bright with windows on two sides. Two-double bedrooms (one with an en-suite) and an additional single bedroom are thoughtfully laid out with generous proportions.